

BEFORE TUNING YOU TRUCK FILL OUT THE ATTACHED RACE USE DISCLAIMER & LIABILITY WAIVER AND FAX TO US AT 828-692-9968, OR SCAN AND ATTACH TO AN EMAIL AND SEND TO: sales@spartandieseltech.com

TUNER REGISTRATION

To register your tuner send the following info to sales@spartandieseltech.com

Name, DashDAQ Serial #, and who you purchased your tuner from.

We will not be able to provide technical support, until we have a signed disclaimer from you. DEALER DISCLAIMERS WILL NOT BE ACCEPTED.



DO NOT INSTALL ANY DPF DELETE EXHAUST COMPONENTS UNTIL THESE INSTRUCTIONS HAVE BEEN READ COMPLETELY. DPF DELETE TUNE FILES MUST BE INSTALLED PRIOR TO INSTALLING DPF DELETE EXHAUST COMPONENTS. FAILURE TO INSTALL NEEDED DPF DELETE TUNING BEFORE REMOVING THESE COMPONENTS CAN LEAVE YOUR VEHICLE STRANDED UNTIL THE TUNES ARE INSTALLED AND CAN CAUSE DAMAGE TO YOUR VEHICLE AND ENGINE.

PLEASE CONNECT A BATTERY CHARGER TO YOUR TRUCK PRIOR TO LOADING ANY TUNE. IT DOESN'T MATTER WHICH ONE AND SET IT ON TRICKLE CHARGE.



SPARTAN

DIESEL TECHNOLOGIES

Hendersonville, NC (828) 606-3263
www.SpartanDieselTech.com

RACE USE DISCLAIMER AND LIABILITY WAIVER

This product is designed for competition racing use only. Use on State and Federal Highways is a violation of the EPA Clean Air Act. The Clean Air Act can be found at <http://www.epa.gov/air/caa/>. This document contains in detail what are considered to be violations of the CAA and corresponding penalties for failure to obey and should be read in full before signing this disclaimer and/or installing this off-road, race use only product. Ensuring that all emissions, noise/sound, and speed/use related laws are followed is the responsibility of the Buyer(s). Installation and use of this product indicates that this disclaimer has been read, acknowledged, and understood fully by both the Buyer(s) and Installer(s).

The Buyer(s) assume all associated risk of the purchase and/or use of this product. "Spartan Diesel Technologies" assumes no responsibility of any personal injury, death, or property damage associated with the use of this competition racing use-only product. The Buyer(s) assume all responsibility of ensuring that all applicable speed and safety restrictions are followed during the use of this product. This includes staying within speed limits of tire rating, engine speed restrictions, and legal competition racing use of the vehicle and associated product. The above is regardless of capabilities enabled by use of any "Spartan Diesel Technologies" product. All local, state, and federal laws and ordinances must be adhered during the use of the product. Determining the nature of these laws and ordinances is the exclusive responsibility of the Buyer(s).

Manufacturer Limited Vehicle Warranties should be referenced before installation and use of this product. "Spartan Diesel Technologies" shall not be held responsible for voidance of any Manufacturer Warranties. The vehicle manufacturer is to be referenced directly by the Buyer(s) to determine what is or is not permissible under the Manufacturer's Limited Warranty. The Buyer(s) assume all possible damages and associated costs in the situation of Manufacturer Warranty voidance.

Installation, service, and use are solely the responsibility of the Buyer(s) and Installer(s) of the given product. "Spartan Diesel Technologies" assumes no liability for personal injury or property damage due to misuse, mis-installation, or improper service of the product. The Buyer(s) and Installer(s) assume all responsibility of ensuring that all proper instructions for installation and use are followed. This product is capable of the following:

- I. Making the vehicle non-compliant with Local, State and Federal emissions regulations.

- II. Making the vehicle capable of generating vehicle speeds unsafe for driving

conditions.

III. Making the vehicle capable of generating conditions exceeding safe vehicle speeds based on mechanical condition of the vehicle, such as tire speed ratings.

IV. Making the vehicle capable of exceeding mechanical limits of engine speed, power output, and mechanical stress upon the powertrain, driveline, chassis, and body of the vehicle.

V. Producing power and torque output requiring superior driving skills and techniques in order to be safely applied.

It is the sole responsibility of the Buyer(s) and User(s) of this product to be aware of these additional capabilities and adjust the installation and use of the product accordingly. All other warranties, express or implied, are not applicable for the purchase and use of this product. Failure of the product due to misuse or mis-installation is specifically excluded from the Limited Warranty of this product. "Spartan Diesel Technologies" will not be held liable for indirect, incidental and/or consequential damages caused by the purchase, installation, and/or use of the product.

Signature of this disclaimer and waiver is necessary in order to receive tunes/calibrations from Spartan Diesel Technologies to enable use of our DPF Delete 6.4 Liter, or 6.7 Liter Ford Products.

Signature of this disclaimer and waiver implies that the Buyer(s) and all potential User(s) have read, understood, and accepted the contents and responsibilities of both the said disclaimer and Federal EPA Clean Air Act linked and referenced herein.

PRINT NAME OF BUYER	ADDRESS OF BUYER
CONTACT TELEPHONE	CITY, STATE, ZIP CODE
EMAIL ADDRESS	TUNER SERIAL NUMBER
SIGNATURE OF BUYER	



SPARTAN
DIESEL TECHNOLOGIES

Hendersonville, NC (828) 606-3263
www.SpartanDieselTech.com

Website Setup and Basics

Our 6.4L Powerstroke products **now come preloaded with the following tunes:**

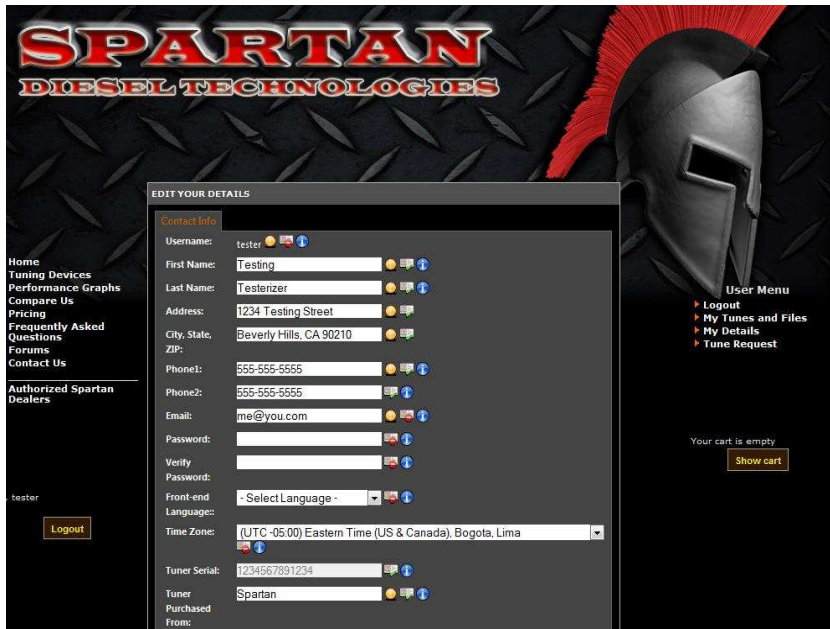
40HP On-Road (DPF On) 75HP On-Road (DPF On)
125HP On-Road (DPF On) 150HP On-Road (DPF On)
40HP Race (DPF OFF) 75HP Race (DPF OFF)
125HP Race (DPF OFF) 150HP Race (DPF OFF)
175HP Race (DPF OFF) 210HP Race (DPF OFF)
250HP Race (DPF OFF) 275HP Race (DPF OFF)
300HP Race (DPF OFF) 310HP Race (DPF OFF)
350HP Race (DPF OFF)

Customer/Dealer Login
Username or email
newcustomer
Password

 Remember me
Login
Forgot login?

Upon receiving this product, please log into our site at www.spartandieselttech.com, using the "Customer/Dealer Login" form found on the main page of our site. Please use the "username" and "password" that we provided when you registered your tuner with us.

Directions will be provided in the email on how to confirm and activate your account.



A confirmation email will be sent to the email address you provide to us at time of purchase. Directions will be provided in the email on how to confirm and activate your account.

Once logged in, you will be required to provide specific information about your vehicle. Select "My Details" under the "User Menu" on the right side of the page, then "Edit", and "Update Your Profile". You must fill out all required fields with the correct information. The "VIN" and "Strategy" information can be found by plugging your Phalanx Console into your vehicle. Power the console unit on. From "Gauges", select "Exit".

Next select "Tuning". Now select "Vehicle Info" and then follow the directions on the screen. **This information is required for technical support- tech support cannot be provided until this profile is filled out completely.**

We highly recommend all new users visit our web site and forum for assistance and detailed instructions at <http://spartandieseltch.com/index.php/frequently-asked-questions/5-tech-support> , and technical support forum www.spartandieseltch.com/forum . Both provides a wealth of information about gauges, monitor configurations, custom tune file downloads, and many other helpful subjects.

Previous customers please note- it is no longer necessary to use the "tune request" function of your profile, since our products are now pre-loaded with tuning



Tuning Installation

To begin the tuning process, visit the "Tuning" menu of the Phalanx console with the console plugged into the vehicle. (The vehicle diagnostic port is located under the dash on the driver's side). Click on the "Load Tune" function. The console will then prompt on-screen key-on/key-off instructions to retrieve your vehicle's calibration information- **do not start the vehicle during this process**. Once complete, a list of available tune files will appear (these can be scrolled through using the left and right arrows at the top of the screen). Please choose the tune you wish to install accordingly- make sure that the correct DPF setting is chosen for your application.

On-Road (DPF ON) Tuning- to be used competition racing use only applications, with the factory DPF (Diesel Particulate Filter) and DOC (Diesel Oxidation Catalyst; otherwise known as catalytic converter) still in place. If you have not removed any exhaust components, these are the settings you will need to use.

Race Tuning (DPF OFF) Tuning- to be used STRICTLY for competition racing use applications (please

reference your copy of the signed Liability/Race Use Disclaimer for legal details). These tunes are to be installed if your factory DPF and/or DOC is going to be removed after installing the tunes.

Installing racing only tuning with the DPF in place will cause DPF and engine damage; Installing on-road tuning with the DPF removed will place the vehicle in constant regeneration (filter cleaning mode) and will excessively overfuel- causing an excess of white exhaust smoke and eventual engine damage. Please choose carefully; if you aren't sure as to which needs to be installed in your application, contact our tech support department.

Once the proper tune file has been chosen, the console will begin backing up your stock file, then installing the chosen tune file. The stock file backup is done automatically and requires no intervention. The first "flash" of the vehicle will take 32 minutes to back up the stock file and download your new tune file. **Do NOT unplug or shut down the Phalanx console during the file loading process, and do NOT turn the ignition switch/key off for any reason until the file is complete. Doing so will destroy the vehicle computers, leaving the truck inoperable until towed to a Ford dealership for computer module replacement- damage from this is NOT warrantable by Spartan or Ford- SO DO NOT TURN THE KEY OFF DURING DOWNLOAD, PERIOD.**

Installing Upgrade Licenses and Custom Tunes

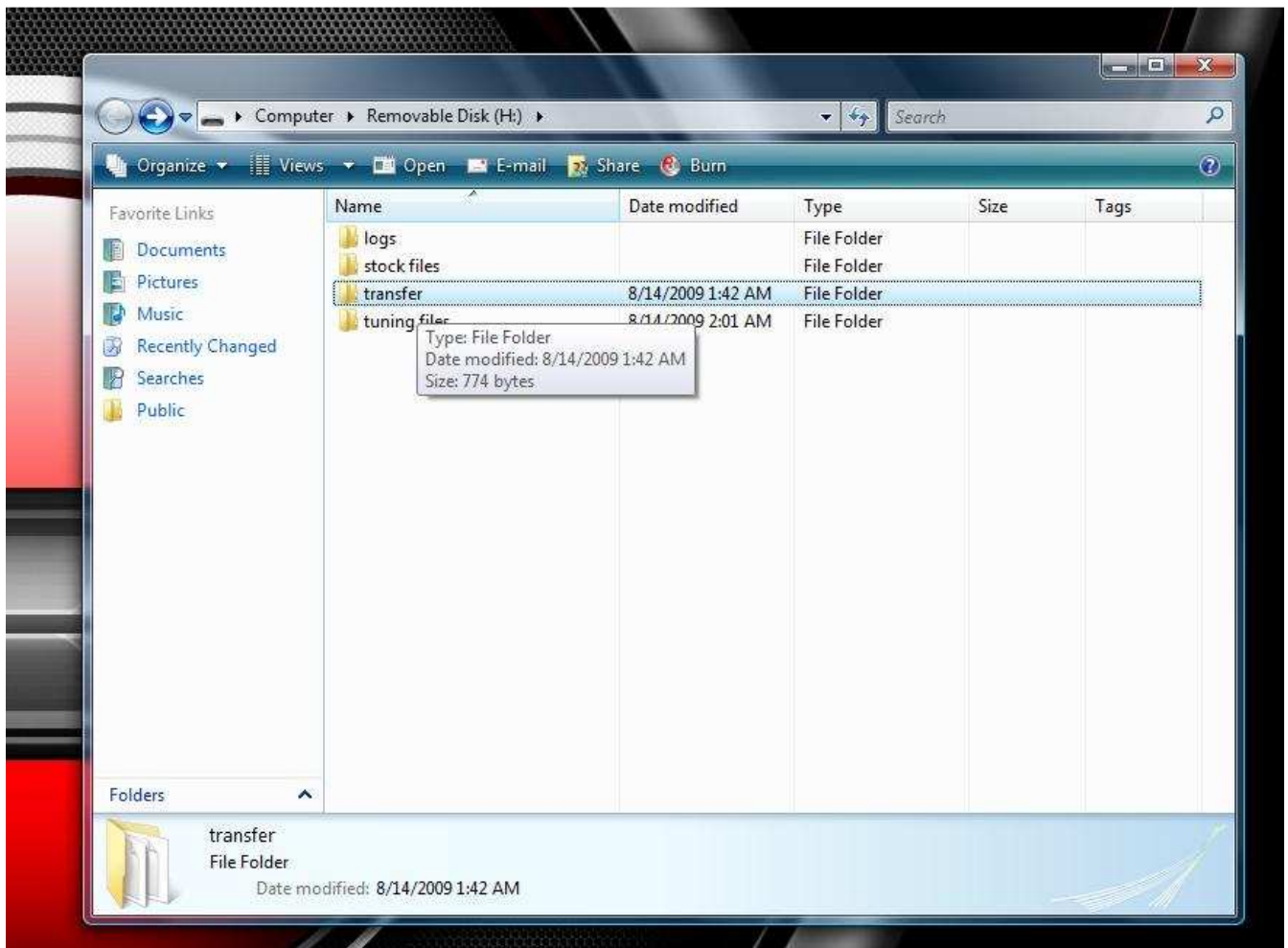
If you have purchased an upgrade license to acquire the tcm tunes, the license file will need to be installed to your Phalanx Console for those files to become active and usable.

Once purchased, the license file will either be downloadable from the "My tune and Files" area of your customer profile on our website, or sent via email if purchased from an authorized dealer.

Once downloaded to your PC, the file needs to be copied to the SD memory card located in the slot on the right side of your flash console. Remove the card by pushing in slightly, and it will pop out. The card will then need to be installed into your PC (if your computer does not have an SD Memory Card reader installed, they are available at any computer supply store such as Best Buy and even at Wal-Mart).



When the card is installed into your PC, choose the option from the pop-up menu "Open folder to view files".



Drag the downloaded license file from your PC into the "transfer" folder shown above. After moving, you should see the license file listed by double-clicking on the "transfer" folder to open it.

Once placed onto the SD memory card, reinstall the card into your flash console with the console unplugged. Then the license can be installed by using the "command" function inside the tuning menu, or by going to "Setup", then "SD Card", then "Install", then "License" and selecting the needed license.

The console should confirm installation of the license with a message that says "License Installed Successfully"- once this is complete the extra tunes associated with the license level you purchased will be available in the "Load Tunes" menu for installation into your vehicle.

Any custom files (written specifically for your truck, i.e. for hardware modifications, ect.) delivered will be downloaded in an identical manner, except placed into the "tuning files" folder. Once located there, they will be accessible via the "Load Tunes" menu like all others



Gauge Configuration

Your Phalanx Flash console comes pre-set with our recommended monitoring options. Only one step is required to bring the monitoring functions online and viewable.

With the console plugged into the vehicle, and the vehicle either "keyed" on or running, select the "Find Signals" button within the setup menu. This will identify all monitor able signals on your vehicle.

Instructions for gauge customization are available on the Update Software disc included with your tuner, and on our forums and Drew Technologies' website at www.spartandieselttech.com/forum and www.dashdaq.com respectively. A full list of signal definitions is also available on both sites. Below is a quick "run through" of the most commonly used acronyms-

EGRTA, "Exhaust Gas Recirculation Temperature A" in the Ford Specific list = Pre-Turbo EGT

MGP, "Manifold Gauge Pressure" in the Ford Specific list = Boost

ECT, "Engine Coolant Temperature" = Standard engine temperature (coolant)

EOT, "Engine Oil Temperature"= Temperature of engine oil after oil cooler

FRP, "Fuel Rail Pressure" in Ford Specific and Generic OBDII lists = High Pressure Fuel System Pressure

IAT1, "Intake Air Temperature 1" = Air Temperature at Mass Air Flow Sensor (near air filter)

IAT2, "Intake Air Temperature 2" = Manifold Air Temperature, after intercooler

FRT, "Fuel Rail Temperature" = Temperature of fuel return to high pressure fuel system



EGR Delete Files, Manual Transmissions, and other notes

Please note if you need egr delete tunes for trucks with automatic transmissions, you will need to download them from our website after registering your tuner with us. These files are designed for use with any aftermarket EGR Delete/Removal kit, and will work with any brand of EGR delete that removes the EGR cooler, EGR Valve, EGR throttle plate, and other EGR-related components. The purpose of these tunes is to eliminate any diagnostic trouble codes and cruise control inhibition caused by removal of the EGR system. If your truck has the EGR removed, please choose the appropriate delete tune for the HP level you want to use.

Vehicles equipped with the 6-Speed manual transmission will not automatically identify tune files. Please send an email to tech@spartandieseltch.com containing the following info so we can write your tune. Subject line of the email should be Manual 6.4L Tunes

Name

DashDAQ serial #

Who the unit was purchased from

Vin # and strategy code

Please specify if you need regular, or egr delete tunes

Also note that some files are labeled as "el". These tunes are designed for later-model MY2009 and MY2010 trucks (or any 6.4) equipped with 3.55 ratio differential gears. Use of these tunes is not mandatory, but users with 3.55-gear trucks will find shifting and lockup to be most optimal with them.

Thanks,

6.4L Calibration Team

Spartan Diesel Technologies